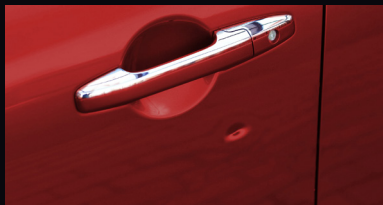




# Preferred LeaseCare

**ACTIVE PROTECTION** Maintains Vehicle Value

**NOT** Just Lease End Benefits — Lease **NOW** Benefits — Keep Your Vehicle Looking Showroom New



**Dent & Ding**



**Windshield**



**Interior/Exterior**



**Key Replacement**

END OF TERM CHARGES:	
Body Scratches on Left Rear Quarter Panel	\$380.00
Front Bumper Cover Damage	\$400.00
RR/LR Tires - Vio - Replace	\$600.00
Back Door Handle - Passenger Left	\$145.00
Front Right Headlamp Damaged - Replace	\$340.00
<b>TOTAL DUE:</b>	<b>\$1,865.00</b>
LESSOR NAME: Susan Qnt	LEASE TERM: Sept. 2014 - Sept. 2017
LEASE VEHICLE: Year 2014	Make Ford
	Model Edge
	Body Style SUV
	Mileage 8,207
	Serial Number VFN90557345712

**Lease End Protection**

## Keep Your Leased Vehicle in Showroom Condition

Leasing a vehicle should free you from the worries of ownership, not add more stress. But dents and dings, chipped windshields, interior stains and spills, lost or damaged keys, and even hail damage can happen whether leasing or financing a vehicle. Many programs offer benefits designed to safeguard from wear and tear at lease end, but Preferred LeaseCare offers the unique value of ACTIVE PROTECTION so these problems can be solved as they happen. This program offers coverage for all these damages during your lease — and at lease end — so you can enjoy a well-maintained vehicle throughout your lease period while helping to avoid losing your security deposit or paying for extra expenses at lease turn-in.

## Active protection during your lease includes:



### Lease End Benefit up to \$2,000: Covers common Wear & Tear - No Single Event Limit

- Tires
- Wheels
- Exterior Scuffs
- Bumpers
- Missing Parts
- Chrome Trim Moldings
- Door & Hatch Handles
- Cracked Turn & Brake Lenses
- And more

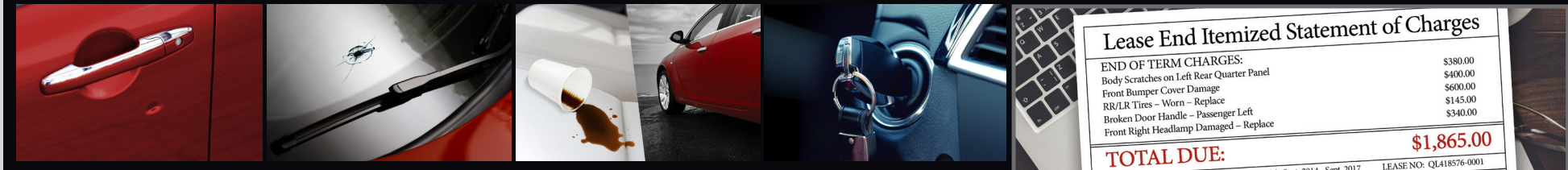
\*This is a summary of possible benefits available. Certain restrictions and limitations may apply. Please refer to the actual agreement for specific details and limitations.



# Preferred LeaseCare

**ACTIVE PROTECTION** Maintains Vehicle Value

**NOT** Just Lease End Benefits — Lease **NOW** Benefits — Keep Your Vehicle Looking Showroom New



## Dent & Ding Repair

Minor dents and door dings are removed by trained technicians.

- No limit to the number of times the Paintless Dent Repair process can be applied
- No sanding, painting, or body fillers are used
- Hail damage deductible is covered up to \$1000 when using Paintless Dent Repair

## Windshield Repair

A permanent process in which cracks and breaks may be repaired with a powerful resin.

- A trained technician will repair your damaged windshield, so you avoid the cost of replacement
- Repairs minor stars, cracks and chips
- Can save on having to pay a costly windshield deductible

## Interior/Exterior Repair

Professional cleanup, reconditioning, or repairs to interior surfaces, and reconditioning of exterior surfaces.

- Exterior protection against fading, road salt, tree sap, bird droppings, acid rain, loss of gloss, and more
- Covers interior damage to vinyl, leather, carpet, fabric, and upholstery

## Key Replacement

If keys are lost or damaged, keys are replaced and programming charges are covered.

- Today's technology has made keys and keyless fobs costly to replace

### Lease End Itemized Statement of Charges

END OF TERM CHARGES:	
Body Scratches on Left Rear Quarter Panel	\$380.00
Front Bumper Cover Damage	\$400.00
RR/LR Tires - Worn - Replace	\$600.00
Broken Door Handle - Passenger Left	\$145.00
Front Right Headlamp Damaged - Replace	\$340.00
<b>TOTAL DUE:</b>	<b>\$1,865.00</b>

## Up to \$2,000 Lease End Benefit

**Covers Common Wear & Tear Such As —**

- Tires
- Bumpers, bumper covers, step bumpers and surroundings bumper trim
- Paint damage
- Front windshield breakage
- Rear windshield & side glass chips and breakage
- Side and rear view mirror glass, surface and mechanical/electrical
- Lenses of head lamps, running lights or fog lights
- Hood ornaments & body insignia
- Chrome, bright metal, moldings and trim
- Discoloration, stone bruises, sand damage and pits
- Mufflers and tail pipe
- Convertible and vinyl tops, including trim and moldings
- Door, trunk and hatch latches
- Front and rear door, hatch and tailgate rubber seals
- Tail, turn signal and brake light bulbs
- Audio equipment, speakers, and systems
- Missing parts up to \$200 each

**No Aggregate Limits**

**No Single Event Limits**

\*This is a summary of possible benefits available. Certain restrictions and limitations may apply. Please refer to the actual agreement for specific details and limitations.